



MOUNT HOLLY COMMUNITY HISTORICAL MUSEUM

Summer 2021

Our mission is to enlighten our community with an understanding of our past to
promote an objective vision of the future.

Home of the Vermont State Terrestrial Fossil

Visit the Museum This Summer

The Museum is open every weekend from 2-4 pm throughout July and August. Come view the mammoth tusk and other exhibits of historical interest in both the Perkins House and the Blacksmith Shop which are in the Village of Belmont.

Mark Your Calendars

Visit Our Facebook page and website:
www.mounthollyvtmuseum.org for details!

Annual Membership Meeting and Potluck Dinner Join Us Become a Museum Member

Mammoth Update Presentation by Dr. Nathaniel Kitchel

The Annual Membership Meeting and Potluck Dinner will be Tuesday, August 3rd at The Odd Fellows Hall starting at 6 pm with the Potluck Dinner followed by a brief Membership Meeting. **At 7 pm the public is invited to hear Dr Nathaniel Kitchel's Presentation about the Mount Holly Mammoth.** He will give us an update on his research about the Mount Holly mammoth. For those who are not familiar with the existence of the mammoths in Mount Holly, come listen and learn about how these mammoths came to be here 12,000 to 13,000 years ago when the ice sheet was melting. While the land was

being prepared for the railroad in the summer of 1848, the crew discovered fossilized bones of a Woolly Mammoth which later was named the Vermont State Terrestrial Fossil.

Belmont Village Tours

Led by
Dennis Devereux, Museum
Historian

**Saturday, August 14th
2 pm.**

Meet at the Perkins House
Museum Collection Tour in case of rain!

History of The Grange in Mount Holly

Presented by
Sue Dawley Leblanc
**Sunday, August 15th at 2 PM
Perkins House**

Sue will give a talk about the history of the Grange. As a long-time member Sue will talk about its founding and memories of her family's involvement over the years in the state and local Granges.

BAKED HAM DINNER To Benefit the Museum Saturday, September 4th The Odd Fellows Hall Belmont

First seating at 5:00 pm
All You Can Eat - Served Home Style
Adults \$12 - Children 11 and Under \$6
Take Outs Available

New Donations to the Museum

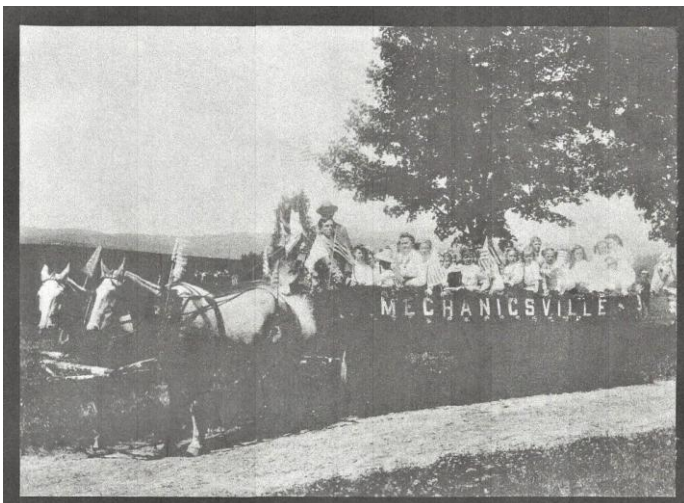
We are grateful to the families that generously donated items in the past year that have a Mount Holly connection.

Carole Cook Haas wanted the museum to take possession of the large portrait paintings of her great-grandparents Nelson Wyatt Cook and his wife Mary.

Royal Barnard donated an 1877 broadside advertising two plays that were put on by the Mechanicsville Dramatic Club. The "Enlisted for the War" drama was offered two evenings, and the "My Turn Next" comedy was staged only once.

Joan Connor donated an early picture postcard of the antique shop that was part of the Lakeview complex. The photograph would have been taken by Mechanicsville (Belmont) postmaster Howland Marshall. The shop was operated by Edward White who also stenciled and sold and installed wallpaper.

The Bladyka family from Springfield donated a photograph of our area that was collected by their mother's Parmenter family. The photograph from the early 1900s shows a parade float with children riding in a horse drawn wagon.



NEW GIFT SHOP ITEMS

Short Sleeve Cotton T-Shirts

Long Sleeve SPF 50 Shirts



Mammoth Puzzles



Baseball Hats



**More Mammoth Items
Coming Soon...**

Visit www.mounthollyvtmuseum.org for a complete list of gift shop items.

Membership Appeal

Operating the museum was difficult during the pandemic and we were not able to have our normal fundraising activities making Membership Dues and donations more important than ever.

Our regular yearly expenses of approximately \$10,000 include heating, alarm system, telephone, insurance, electric service, cleaning, fundraising expenses, lawn mowing, snow removal and guest speakers.

In addition to these regular expenses, there are constant maintenance issues with the buildings.

Please consider joining the museum if you are not already a member. We are always looking for new people to become involved in the keeping of our town's story. Please call Dennis Devereux at 802-259-2460 for more information.

Membership Information

Membership categories:

Individual \$10.00

Family \$25.00

Patron \$100.00 (For which you will receive a complimentary book)

Friend \$250.00 (Which includes a copy of our 1850's panoramic print)

Museum Mission Statement...

The Mount Holly Community Historical Museum, an organization of volunteers, aims to enlighten the community with an understanding of its past through the preservation, display, and storage of locally significant historical artifacts and records, and through educational programs.

Mount Holly Mammoth Update

While the land and swampy areas were being prepared for the railroad in the summer of 1848, the crew discovered fossilized bones of a Woolly Mammoth.

Some of the fossilized bones were housed at various places such as Dartmouth College (rib donated), the Perkins Museum of Geology at the University of Vermont, and the museum of comparative Zoology at Harvard University. At the Mount Holly Historical Museum, you can see one of the original tusks and casts of a molar, a rib and several foot bones.

Last year, Radiocarbon dating research performed by Dr Nathaniel Kitchel and Dr Jeremy DeSilva from Dartmouth College, on one of the ribs provided amazing and historical results proving that the age of the Mount Holly mammoth was actually 11,000 +/- years ago which are among the youngest dated Mammoths from New England. This timeline potentially overlaps the timeline of the first humans after the ice age and questions the possibility of human association with the mammoth. Lithic tools and debitage left by Paleoindians were discovered at the Jackson Gore site, in Ludlow, which were indicative that there was a route used by the Paleoindians during the Pleistocene era. This is a few miles from the Mammoth site in Mount Holly.

This past winter, some of the board of directors from the Mount Holly museum joined Drs Nathaniel Kitchel and Jesse Casana from Dartmouth to observe a GPR (Ground penetrating radar) survey in the area where the Mount Holly mammoth was discovered.

The goal is to find more of the buried mammoth or evidence left by Paleoindians which could provide more information about the ecological environment in which the mammoth lived as well as evidence of human activity in the area and possibly human coexistence or involvement in the death of the mammoth. **We look forward to finding out the GPR survey results at the Annual Meeting on August 3rd.**

Meet The Artist who has created the museum's new Mammoth Artwork and Logo...Maria Fortier



"My love for painting started in 1983 when my friend and I discovered a lovely art studio in Sturbridge, MA. that was offering weekly painting classes in oils and acrylics. The setting was perfect and for over a decade.

When the studio closed the teacher agreed to provide weekly classes at her home studio that lasted 4-5 years.

In the meantime I joined the local CT Painting Chapter and attended multiple painting seminars held in CT. and throughout the U.S. - The Annual New England Painting Convention in R.I. and the Annual U.S. National Painting Convention.

Throughout my painting career my art work sold in MA and CT and was exhibited at the Fairfield's Women's Club, CT. and the National Painting Convention in Providence, R.I.

I've taught painting privately and locally in CT for many years and was commissioned multiple oil pieces.

I feel that painting in all mediums and learning everything I could about the beautiful world of art/crafts has balanced and enriched my life by counteracting the stress of my Professional Nursing Career."

Ice Cutting Display

Before the advent of electricity and refrigeration, people kept their food from spoiling by placing it in ice houses. An ice house was built with an outer and an inner wall usually 12 inches apart. The space between the walls was filled with sawdust, which worked as insulation. Blocks of ice were cut from a nearby water source and placed in the ice house. This ice would last for a year.

Come to the Blacksmith Shop and see our new display of ice cutting tools researched and created by Paul and Judy Nevin.



Photo from Mankato Free Press, February 5, 1894 – Workers use a team of horses to cut through a thick layer of ice.

Mount Holly Community Historical Museum

P.O. Box 17

Belmont, Vermont 05730

mounthollymuseum@gmail.com

Genealogy Inquiries:

Dennis Devereux

P.O. Box 1

Belmont, VT 05730

802.259.2460

ddevereux@vermontel.net